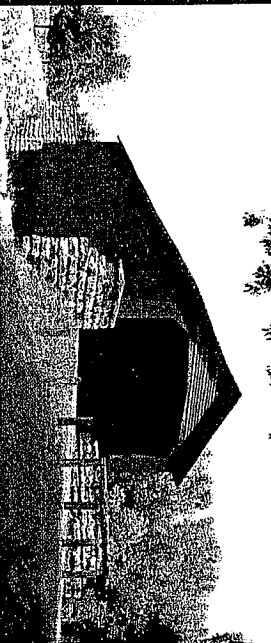
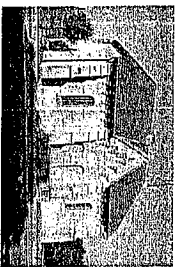


HISTORICAL



Mary's River Covered Bridge

Built as part of a planked toll road between Bremen and Chester in 1854. A two-horse wagon paid 20¢ with additional animals, 5¢ ea. In 1872 the bridge was sold to Randolph County for \$2,000 and used as part of the highway system until 1930. It is now a state rest area.

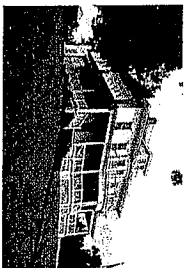


Randolph County Museum and Stone Cottage

The museum building is all that remains of the second Randolph County Courthouse. It was an annex to the main building in 1864. Next to the Randolph County Museum is the Stone Cottage. The limestone cottage was built ca. 1850 and is an example of architecture of that period.

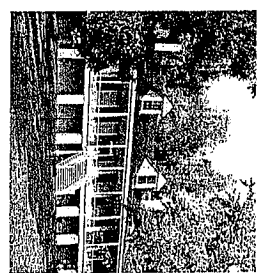
Cohen Home

The home sits on a bluff looking over the Mississippi River. Its unique cobalt blue windows were admired by Mark Twain while aboard a paddle wheeler at the Chester riverfront. The Cohen Home is available for meetings, family reunions, showers, anniversaries or any special occasion. 618.826.2755



Pierre Menard Home

State Historic Site



"The Mount Vernon of the West" is the finest example of French Colonial architecture in the Mid-Mississippi River Valley. Built in the early 1800's for Illinois' first lieutenant governor Pierre Menard. Phone 618.859.3031

ANNUAL EVENTS

Eagle Trek at Kaskaskia Lock and Dam

First Saturday in February

Annual Easter Egg Hunt at Cohen Complex

Weekend of Palm Sunday

Veterans Day and Memorial Day Services

Fort DeChartres Rendezvous

First Full Weekend in June

Corn Fest at Charter Oak School

First Saturday in August

Popeye Picnic

First Full Weekend After Labor Day

Fort Kaskaskia Music Festival

4th Weekend in September

Then & Now Historic Tour

First Sunday in October

Annual Halloween Party

Saturday Prior to Halloween

Christmas on the River

First Full Weekend in December

Christmas Dinner

First Saturday After the Christmas Walk

CHESTER CITY HALL

1330 Swanwick Street, Chester, IL 62233

618.826.2326 | www.chesterill.com

CHESTER CHAMBER OF COMMERCE

10 By-Pass Rd., Chester, IL 62233 | 618.826.2721

LODGING

REID'S BEST WESTERN

2150 State St, Chester, IL 62233 | 618.826.3034

THE STONE HOUSE BED & BREAKFAST

509 W. Harrison Street, Chester, IL 62233

618.604.9106 | www.thestonehouse.net



WELCOME HOME TO ILLINOIS
POPEYE



ILLINOIS
TOURIST GUIDE

ILLINOIS
MILE AFTER MAGNIFICENT MILE



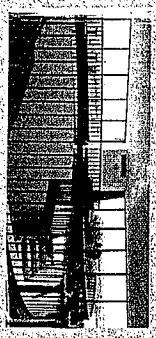
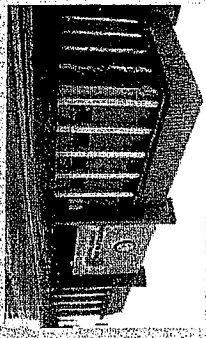
ILLINOISOUTH

10M10/13

MAIN ATTRACTIONS

RECREATION

ATTRACTIONS



COURTHOUSE
The Randolph County Courthouse is the center for government business within the county attracting a number of visitors to this area for business as well as the amazing 360 degree view from the rotunda. #1 Taylor Street, 618.826.5000

WELCOME CENTER

The Chester Welcome Center is located in Segar Park. There is a large deck providing an excellent view of the Mississippi River, Missouri Bottoms and Chester Bridge which connects Illinois and Missouri. It is a pleasant and frequent stop for many travelers and locals. Overlooking the park and welcoming visitors is the large bronze statue of Popeye the first of numerous Popeye and Friends Character Trail statues placed in various locations in Chester. 10 By-Pass Road, 618.826.3171



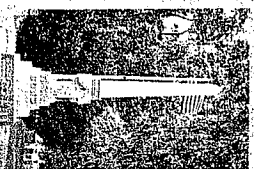
SMITH'S LANDING

The park was named for the ferry landing established by the founder of Chester. The original Smith's Landing was located approximately one mile north of this park.



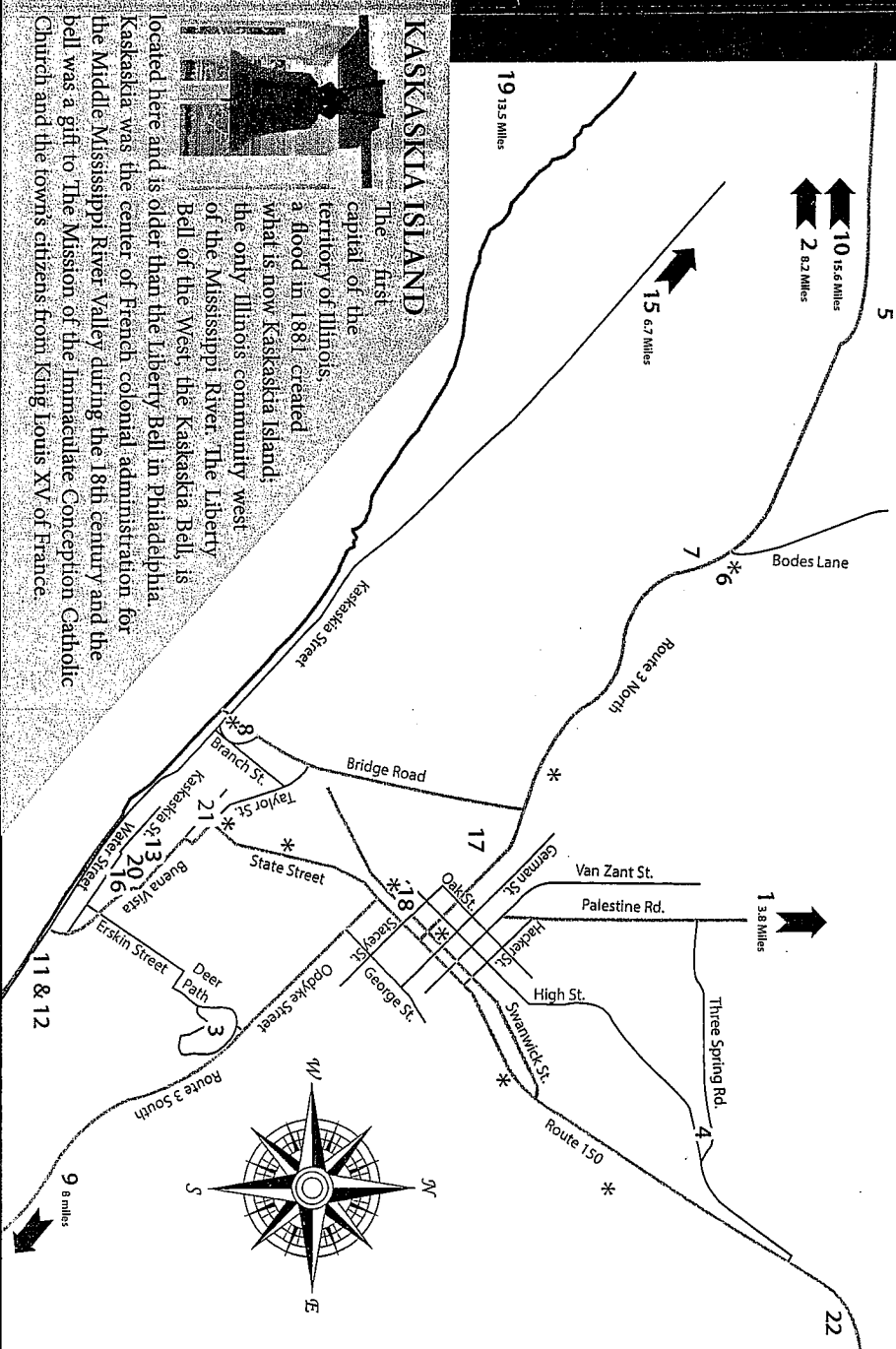
SHADRACH BOND MONUMENT

Sits on the smallest state park in Illinois. Shadrach Bond (1773-1832) was the state's first governor, and for six years before statehood was the first representative of the area to become Illinois. Located in the Evergreen Cemetery.

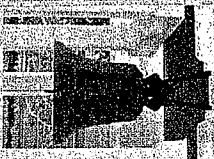


- 1 - Randolph County Conservation Area
- 2 - Fort Kaskaskia State Park
- 3 - Cole Memorial Park & Municipal Swimming Pool
- 4 - Chester Skateland
- 5 - Chester Country Club
- 6 - Cohen Recreational Complex
- 7 - Breezy Hill Flying Model Airplane Complex
- 8 - Segar Park & Welcome Center
- 9 - Middle Mississippi Wildlife Refuge
- 10 - Kaskaskia Lock & Dam
- 11 - Chester Riverfront

- 12 - Smith's Landing
- 13 - Chester City Steps
- 14 - Popeye and Friends Character Trail *
- 15 - Pierre Menard Home
- 16 - Cohen Memorial Home
- 17 - Bond Monument
- 18 - Spinach Can Collectibles
- 19 - Kaskaskia Island
- 20 - The Stone House
- 21 - Randolph County Courthouse, Annex Museum & Stone Cottage
- 22 - Covered Bridge



KASKASKIA ISLAND



The first capital of the territory of Illinois, what is now Kaskaskia Island; the only Illinois community west of the Mississippi River. The Liberty Bell of the West, the Kaskaskia Bell, is located here and is older than the Liberty Bell in Philadelphia. Kaskaskia was the center of French colonial administration for the Middle Mississippi River Valley during the 18th century and the bell was a gift to The Mission of the Immaculate Conception Catholic Church and the town's citizens from King Louis XV of France.